



Times of Shrewsbury

June 2022



SHREWSBURY PUTS THE UNITY IN COMMUNITY!

For fans of live music and festivals like us, the summer of 2020 looked like it would be nothing but void of our favorite activity, as Covid canceled all our plans to attend events. We asked ourselves...Why not bring a safe, physically distanced outdoor music series to Shrewsbury? And so, the Meeting House Concert Series was born. Whomever thought the need would still be there in 2021, and what's the story in 2022?



Quickly growing, our community audience from 60 folks at the first concert, to about 150 at most of the other concerts, we knew we were on a roll. People would stop us and say..."This has done so much for my morale", "I feel like I can have a social outing and get out of my house", "I get so much joy from attending", and when you experience that, you want more, right? And so, in the cold of January we begin contacting musicians and planning for the next season.

But what makes it tick? It's our community, and by community we mean not just Shrewsburies, though there are many, but they bring their friends and family in from near and far. They attend with their good cheer and they help out as we go. The word is out...the hills ARE alive with the sound of music!

Many people have supported the musicians with their generous cash contributions, and so we continue on to host our third season of nine concerts starting June 4, with the Krishna Guthrie Band. But in our first two seasons, there have been so many joyful and fun moments, creating memories for those who attend. If you've been there, you may have noticed...

- ◆ the Jesser-Wilson family walking down through the trail near their house to the concert....a true backyard adventure.
- ◆ a pickup truck bed full of dancing, clapping, smiling children
- ◆ spontaneous group, individual and couples dancing, free form, two step, waltzing...
- ◆ little kids rolling down the hillside, belly laughing all the way
- ◆ tailgate picnic dinners and portable tables filled with a summer feast
- ◆ young and old alike, savoring Pierce's maple creemees
- ◆ not a single piece of trash left behind for the crew to pick up!
- ◆ the setting sun over our incredible view of the mountains

We could not have continued without the help of Aaron Korzun, who donated his time and expertise to make sure the electrical system was stable at the old town garage; Jean Marie Walker and Boaz Cohen, who organized and ran the drawing for the poster at each concert; Aaron Schneider's artistry in creating the 2021 commemorative poster and visually capturing the magic; Aaron K., Aaron S., and Thomas Hartigan who brought their jovial presence to everything from parking cars to wannabe security guards (as if that was ever needed); Julanne Sharrow for helping us get all the dates straight on the event calendar for the hall, Betsy Jesser and Chryl Martin for helping get the word out every time through the Newsflash and the Times; Sue Ransom-Kelley for her care of the Meeting House and especially the absolutely sparkling clean bathrooms; and to Mark Youngstrom and the entire Meeting House Committee for believing that it would work and continuing their support.

We endeavor to keep it simple, and so appreciate your continued attendance and support. This year the only new feature is that Paul, our C.F.O. (Chief Food Officer) has worked hard to bring a food vendor to each concert. More on that to come! We'll see you at the Meeting House!

Article and photos by Vicky Arthur



Employment Opportunity

Town of Shrewsbury is accepting applications for
Road Crew member

Work includes: plowing, ditching, road repair, roadside mowing, culvert work, chainsaw operation, equipment maintenance, and other duties.

Benefits include 100% Town paid Medical and Dental insurance

A clean driving record, CDL Class B License, and ability to pass drug/alcohol test required.

Contact Jamie Carrara @ 492-3656

Vermont State Senators:

Brian Collamore: bcollamore@leg.state.vt.us
Cheryl Hooker: chooker@leg.state.vt.us
Josh Terenzini jterenzini@leg.state.vt.us

Vermont State House of Representative:

Logan Nicoll: lnicoll@leg.state.vt.us

The Vermont General Assembly is in session January thru June. To view committee member-ships, bills that have been introduced, track each bill's progress, and review committee agendas go to www.leg.state.vt.us. During the week you can contact your legislator by leaving a message at the State House by calling 1-800-322-5616 or 828-2228 (the Sergeant-At-Arms' Office).

United States Senators:

Senator Patrick Leahy

www.leahy.senate.gov/contact
Vermont Office: (802) 229-0569
Washington office: (202) 224-4242

Senator Bernie Sanders

www.sanders.senate.gov/contact
Vermont Office: (800) 339-9834
Washington D. C. Office:
(202) 224-5141; Fax (202) 228-0776

United States House of Representative:

Representative Peter Welch

<https://welch.house.gov/contact>
Vermont Office: (802) 652-2450 or (888) 605-7270
Washington, D.C. Office: (202) 225-4115

Revised 8/1/2021

The Times of Shrewsbury

The *Times of Shrewsbury* is published monthly from February through December, and compiled by volunteers from material submitted by residents with the goal of informing townspeople of what is happening in Shrewsbury. The views and opinions expressed in articles are solely those of the author and not necessarily those of the editors.

All submissions must be accompanied by the name of the submitting person and are printed at the editors' discretion subject to editing for length and clarity. Letters to the Editor exceeding 350 words will be subject to editing for length. Any information piece or informational political letters (without specific party or vote appeal) will be subject to the guidelines previously described.

A writer of a letter that names a Shrewsbury resident or organization in a critical manner must get copies to the resident or organization, and to the *Times* by the 10th of the month prior to publication or it will not run. If the named person or organization indicates in writing to the writer and to the *Times* that they choose not to respond, the letter will run. If the named entity responds, the response and initial letter will run in the same issue.

There is no charge for: jokes, poems, nature reports, family event announcements, or feature articles or letters that are not commercial.

Articles and Advertisements: Deadline for submission is 5pm on the 20th of the month prior to publication; exceptions will be announced in the prior month's *Times*.

Ads in the *Times* are for area businesses, local non-profit events, and local ballot election advertisements.

Best Formats: Articles: Word or as an email message with no formatting. Photos: jpeg. Ads: jpeg or Word document.

Monthly advertising fees and relative sizes:

Full page	\$90	(7.5"w x 9.5"h)
Half page	\$50	(7.5"w x 4.5"h or 3.5"w x 9.5"h)
Quarter page	\$10	(7.5"w x 2.5" h; or, 3.5"wx 4.5"h)
Business card	\$5	(3.5"w x 2"h)
Classified ad	\$3	(15 words or less)

Payment due by the 20th of the month prior to publication.

Chryl Martin ~ Rich Biziak ~ Victoria Arthur

Times of Shrewsbury, P. O. Box 373, Cuttingsville, VT 05738

Email: shrewsburytimes@gmail.com Online: www.shrewsburyvt.org & www.shrewsburyhistoricalsociety.com

SHREWSBURY COMMUNITY CALENDAR

May 28 - 29	10am-5pm	Vermont Crafts Council Open Studio Weekend
June 4	5pm	*Outdoor Concert at the Meeting House with Krishna Guthrie Band (rain date June 5)
June 5	1pm	Shrewsbury Historical Society meeting at the Museum
June 12	4pm	*Famous Books Book Club discussion
June 18	5pm	*Outdoor Concert at the Meeting House with Will Patton Ensemble concert (rain date TBA)
June 21	7pm	*Summer Solstice singing outdoors at the Meeting House
June 24	4-6pm	*Wine tasting at Pierce's Store
June 25	5pm	*Outdoor Concert at the Meeting House with Gypsy Reel (rain date June 26)
June 26	4pm	*Science Book Club discussion
June 29	7pm	*Northam Cemetery Association Annual Meeting
July 3	1-3pm	*Shrewsbury Historical Society Museum open

*see elsewhere in newsletter for details

TIMES OF SHREWSBURY
online at
www.shrewsburyvt.org
and
www.shrewsburyhistoricalsociety.com



Deadline for submission to *Times of Shrewsbury* is by 5:00pm on the 20th of each month.

REGULAR MEETINGS and EVENTS

Board of Selectman Meeting	1 st & 3 rd Wednesdays – 6:30pm at Town Office
Bone Builders	Tuesdays & Thursdays – 10am at Meeting House
Development Review Board	4 th Wed -7pm at Town Office; check town website for agenda
Library Trustees Meeting	2 nd Tuesday – 7pm at Shrewsbury Library
Mill River Unified Union School Board Mtg	1 st Wed 7pm @ MRHS & 3 rd Wed. 7pm location TBA
Planning Commission	2 ⁿ & 4 th Tuesdays 7pm at Town Office
Religious Society of Friends (Quakers)	Sundays – 10am via Zoom; contact wildernessfriends@gmail.com
Shrewsbury Community Church	Sundays – 10:30am - Worship service – Shrewsbury Center Church
Shrewsbury Community Church	Sundays – 10:30am - Kids Funday Program - Shrewsbury Center Church
Shrewsbury Conservation Commission	2 nd Tuesday – 5:15pm at 450 Frank Lord Road until further notice.
Shrewsbury Historical Society	Postponed until further notice
Shrewsbury Historical Society Museum	Open Sundays 1-3pm until October 30
Shrewsbury Singers	Currently taking a break
Shrewsbury Sno-Birds	2 nd Tuesday – 7pm at Southside Steakhouse in Rutland
Shrewsbury Volunteer Fire Department	Thursdays – 7pm at the Cuttingsville Station

Shrewsbury Town Website: www.shrewsburyvt.org

Clerk's Office	492-3511 Mon – Thurs 9am – 3pm; Closed Friday
Town Garage	492-3656 (Follow prompts to report roadway blockage on non-work days)
Listers	492-2009 available by appointment
Treasurer's Office	492-3558 Monday 9am-11am
Transfer Station	Sunday 8am-4pm ~ Wednesdays 12noon-6pm
Library	492-3410 Hours: Mon 10am-12noon; Tues 7-9pm; Wed 10am-5pm & 7-9pm; Thurs 7-9pm; Fri 10-12noon; Sat 10am-12noon
Meeting House	492-6050 Reservations: 492-3361 or julanne@vermontel.net
News Flash Email List:	vtbenbeano@gmail.com or benbeano@vermontel.net [Urgent and reminder news info]

Cuttingsville Post Office 492-3585 Window Hours Mon-Fri 7:30am-10:30am & 11:30am-2:30pm; Sat 8am-11am.
Lobby Hours Mon-Fri 7:00am-7:00pm and Sat 7:00am-4pm

Animal Control Officer: Vacant (Contact a Selectboard member) 1st Constable: TBA Game Warden: Tim Carey 793-2776
Emergency Management Aaron Korzun 492-3362 Green Mountain Power outage 1-800-451-2877
Medical-Police-Fire Emergency Dial 911 Ambulance 773-1700 Rutland Hospital 775-7111

SHREWSBURY SELECTBOARD MINUTES

The Selectboard meets the 1st and 3rd Wednesday at 7pm at the Town Office.

April 20, 2022: Selectboard Meeting Minutes

Present at meeting: Selectboard members: Aaron Korzun, Francis Wyatt, Steven Nicholson. Road Commissioner: Jamie Carrara

Members of the Public: Ryan Loso, Nicole Alexander, Dick Brigham.

The meeting was convened at 6:42 PM

Agenda: Motion made by A. Korzun to follow the agenda. S. Nicholson seconded. All in favor, motion approved.

Work in ROW Permits: S. Nicholson made a motion to accept the James Bracy and Brad Goldstein work in right-of-way permits with the conditions stipulated by the Road Commissioner. F. Wyatt seconded. Approved.

LEMP: S. Nicholson made a motion to adopt the 2022 LEMP and NIMS. A. Korzun seconded. Approved.

ARPA Standard Deduction: A. Korzun made a motion to accept the standard deduction for the Shrewsbury ARPA funds. S. Nicholson seconded. Approved.

Liquor License: No paperwork was found, so approval of the liquor license is tabled.

ARPA Funds: Need to file the first report by April 30th.

Appointments: F. Wyatt made a motion to appoint Edmund P. Gaines III as Pound Keeper. A. Korzun seconded. Approved.

New Business: Road crew member Matt Yrsha is done working for the Town of Shrewsbury as of Friday and the Town is looking for his replacement. This is in addition to the vacant road crew member position that we were already searching for.

Ryan Loso requests that a new culvert be put on Wilderness Road near his house to reduce the water dumped into the water table and making its way into his basement. Jamie Carrara is not opposed to adding the culvert. Jamie will look into it further.

Nicole Alexander reported on the plan for application of an herbicide in Lake Bomoseen. The Lake Bomoseen Association already has a permit. Some people have reported seeing a reduction in insect life and tumors on fish where this herbicide has been applied. Nicole would like for the Selectboard to sign on to a statement about discontinuing putting herbicides into our waterways.

Review Minutes: A. Korzun made a motion to accept the 4/6/2022 Selectboard meeting minutes. Seconded by S. Nicholson. Approved.

Review Orders: S. Nicholson made a motion to approve Selectboard Orders #4A for \$1,189.57 and Road Orders #4A for \$17,289.95. Seconded by F. Wyatt. Approved.

Adjourned at 9:10 PM

Respectfully submitted, Francis Wyatt

These minutes are unofficial until approved by the Selectboard at the next regularly scheduled meeting.

May 4, 2022: Selectboard Meeting Minutes

Present at meeting: Selectboard members: Aaron Korzun, Francis Wyatt, Steven Nicholson. Auditor: Rich Biziak

Members of the Public: Bob Knudsen

The meeting was convened at 6:35 PM

Agenda: Motion made by A. Korzun to follow the agenda with the following additions. Auditors report and Town solar, Lister appointment, excess weight permit, and discussion regarding herbicides in waterways letter. F. Wyatt seconded. All in favor, motion approved.

Green Up Day: S. Nicholson made a motion for the Town to donate \$10 and \$20 transfer station punch cards for Green-Up Day prizes. A. Korzun seconded. Approved.

2022 Public Works Mutual Aid Agreement: No changes from last year. A. Korzun made a motion to approve the 2022 Public Works Mutual Aid Agreement. S. Nicholson seconded. Approved.

ARPA Funds: A. Korzun and Megan LaChance filed the required annual report.

Liquor License: A. Korzun made a motion to approve a second-class liquor license for malt and vinous beverages for Shrewsbury Coop at Pierce's (DBA Pierce's). F. Wyatt seconded. Approved.

Excess Weight Permit: A. Korzun made a motion to approve the excess weight permit for Normandin Transit Incorporated. S. Nicholson seconded. Approved.

Auditors Report: The Auditors received independent audit estimates from a few companies. There was a large range. Auditors will send a more specific request for proposal to the same companies to narrow the estimates. S. Nicholson made a motion for the Auditors to proceed with sending out the RFP. A. Korzun seconded. Approved.

Town Solar: Rich Biziak working with our Town Energy Coordinator, Davis Terrell got estimates of solar potential from putting solar panels on the Town Office, Northam Garage and Center Garage. Total kWh output would be more than the Town currently uses. The Northam Garage will need to have the roof replaced, so that isn't a good location until the roof is replaced. Uncertain about the structural integrity of the Center Garage, though the roof is in good shape.

Need to find out about whether electric bill credits can continue beyond a year at a time. The Town Office will likely eventually put in a heat pump, which would increase the yearly kWh usage.

Appointments: A. Korzun made a motion to appoint Adrienne Raymond as Lister. S. Nicholson seconded. Approved.

Herbicides in waterways letter: Discussed what specifics should be in a letter to the Agency of Natural Resources.

New Business: Jamie would like to put a sign on Rte 103 advertising for road crew positions. Need to explore any other options that we can think of to advertise for the positions.

SHREWSBURY SELECTBOARD MINUTES

(continued)

Need to get a new lease agreement with the new owners of the property on Keiffer Road where the Kinsman repeater is located.

Review Minutes: A. Korzun made a motion to accept the 4/20/2022 Selectboard meeting minutes. Seconded by S. Nicholson. Approved.

Reappraisal Funds Transfer: S. Nicholson made a motion to transfer \$6,650 of Act 60 funds to the Reappraisal Fund. A. Korzun seconded. Approved.

Review Orders: S. Nicholson made a motion to approve Selectboard Orders #5 for \$3,433.02 and Road Orders #5 for \$12,494.50. Seconded by F. Wyatt. Approved.

Adjourned at 9:35 PM

*Respectfully submitted, Francis Wyatt
These minutes are unofficial until approved by the Selectboard at the next regularly scheduled meeting.*

Minutes of Selectboard Meeting May 18, 2022

Present at meeting: Selectboard members: Aaron Korzun, Francis Wyatt, Steven Nicholson. Planning Commissioners: Laura Black, Melissa Reichert, Ryan Fitzbeauchamp. Lister: Sharon Winnicki. Development Review Board: Mark Youngstrom. Road Commissioner: Jamie Carrara. Zoning Administrator: Adrienne Raymond.

Members of the Public: Sharon Sweet, Ahmet Baycu

The meeting was convened at 6:30 PM

Agenda: Motion made by A. Korzun to follow the agenda with the following additions: 1204 Baily Road catering permit. F. Wyatt seconded. All in favor, motion approved.

Catering Permit – 1204 Bailey Road: A. Korzun made a motion to approve a catering permit at 1204 Bailey Road for 802 Cocktails. S. Nicholson seconded. Discussion around whether this is really a commercial party operation versus a private party. Permit is for the caterer, not whether there can be a commercial party operation. Approved.

Town Office IT: The Town needs an additional phone line. The Town Office needs to increase its internet speed. A. Korzun made a motion to approve an additional phone line for \$51.54/mo and moving from the 25 Mbps internet speed to the next step up of 250 Mbps at a price of \$129.95/mo (an additional \$50). Approved (2-1).

Town Website: Ahmet discussed various issues regarding the current website and maintenance of a new website.

Planning Commission – Flood Hazard Area & River Corridor Regulations: Laura Black presented proposed revisions to the Flood Hazard Area & River Corridor

Regulations. Discussion including certificate of occupancy permit requirement.

Discussed Zoning and Subdivision bylaw revisions. Questions about survey requirements for boundary line adjustments. Some potential issues for high elevation district permitted uses and consistency between tables and text.

ARPA Funds: Fire Dept will be making a request for some ARPA funds.

Letter to ANR – Herbicides in waterways: A. Korzun made a motion to sign a letter against putting herbicides into Vermont's waterways. S. Nicholson seconded. Approved.

New Business: None.

Review Minutes: A. Korzun made a motion to accept the 5/4/2022 Selectboard meeting minutes. Seconded by S. Nicholson. Approved.

Review Orders: S. Nicholson made a motion to approve Selectboard Orders #5A for \$7,760.85 and Road Orders #5A for \$11,768.63 and correcting Road Orders #5 total to \$12,421.76. Seconded by F. Wyatt. Approved.

Adjourned at 9:15 PM

*Respectfully submitted,
Francis Wyatt
These minutes are unofficial until approved by the Selectboard at the next regularly scheduled meeting.*

Editor's Note: The minutes have been edited for brevity but not content. For complete minutes, go to the Town website www.shrewsburyvt.org

WANTED Town Auditor

The Shrewsbury Board of Auditors is responsible for reviewing the financial statements for the Town of Shrewsbury, and preparing the Annual Report.

- Interested in serving the community?
- Comfortable working with Microsoft Excel?

If so, this might be an opportunity to serve the town!

If you can balance a check book you can handle the town's auditing tasks. Accounting experience would be a plus but not necessary. We can provide instruction and work sheets to help guide you.

Compensation is available.

For more information, please contact either:
Rich Biziak, auditshrewsbury@gmail.com
(802-492-2255)

or
Sandy Bragg, sandy.bragg@gmail.com
(802-492-2143)



SHREWSBURY VOLUNTEER FIRE DEPARTMENT

The recent rains and warmer weather have brought out brilliant green trees and the forest floor is turning green as well. This definitely helped early growth and reduced the possibility of brush and grass fires. However, if you are doing yard cleanup, cutting trees and would like to burn brush you **MUST** call for a burning permit. Contact Forest Fire Warden Kevin Brown 802-345-8668 or Deputy Forest Fire Warden Al Ridlon Jr 802-282-3642. Conditions change rapidly with the unusual temperature swings we are experiencing. The landowner is responsible to control a brush fire, ensure you have proper tools, water supply, and people to assist in containing the fire. However, if you're unable to control your fire, do **NOT** hesitate to call 911 immediately!!

Since the last Times article, we have not responded to any emergency calls. However, that does not stop the work needed to maintain, prepare and operate the SVFD. Both of our Engines were cleaned and prepped for the Rutland Loyalty Day Parade. The parade returned after two years of hiatus due to Covid. Engine 1 was driven by Bob Snarski and co-piloted by Al Ridlon Sr., Engine 2 was driven by Russ Carrara and co-piloted by Tom Ryan. A marching unit participated and consisted of Jack Perry, flag bearers Jon Lees and Hal Niblack, the SVFD banner was carried by Al Ridlon Jr and Kevin Brown. Several local departments sent vehicles, but so proud of our department's participation as Shrewsbury was one of only a few that had a marching unit.

Our monthly business meeting was held on the first Thursday of the month. We reviewed our events of the previous month and made plans for the upcoming month. The following Thursdays we performed vehicle and building maintenance. This work consisted of some minor repairs to the lighting on Engine 2, running our small engine equipment, servicing one of our standby generators, and a general cleaning of the stations. Thanks to Len Page for inspecting, evaluating, and making repairs on the Northam Station roof.

The SVFD is reviewing our vehicle and building needs. We have scheduled meetings with several vendors to evaluate vehicles availability and what our needs are looking to the future. These vehicles impact our stations as the vehicle sizes are increasing, and this impacts our building requirements to house the vehicles.

The SVFD welcomes new member Mark Goodwin. Mark has been attending meetings and drills to become familiar with SVFD operations. Thank you Mark for your continued support of the Shrewsbury community.

Enjoy the upcoming summer and remember

STAY FIRE SAFE

Submitted by Jack Perry

CUSTOM CABINETRY

PROFESSIONAL DESIGN SERVICE

Advantage

KITCHENS
FRANK GUNDAL

KITCHEN DESIGNER

Cell: 339-987-7076

advantage@rcn.com

EVERGREEN REALTY
EVERGREENVT.COM
802.492.9600
OVER 35 YEARS OF DOING IT RIGHT!
ROBERT BALEWICZ
BROKER/AGENT
151 MOUNT HOLLY ROAD
SHREWSBURY, VT 05738

NEWS FROM MONTPELIER

And the legislative session is over. We adjourned for the year on May 12, likely for the biennium unless the Governor vetoes the budget. Last month that veto seemed like a much stronger possibility than it does right now, but for what it's worth it did pass the Senate 30-0 and the House 133-3 in its final form. I once again intend to do a more thorough "end of session report" to recap the bills passed this biennium, but for an abridged version, the legislature passed 215 bills over the last two years including a number of charter changes which go through the normal bill process. So far, the Governor has vetoed 12 bills and the legislature overrode three of those vetoes. 122 bills have already become state law and 14 charter changes have been enacted. We passed 79 bills over the last two weeks of the session alone, which is why there are still 70 bills that the Governor has yet to act on, most of which have not even made it to his desk yet.

As often happens at town meeting, and as I'm sure I've written here in the past, the budget is easily the "biggest" and most consequential bill, and yet it is often the barely debated on the floor. And as consequential as it is, rarely does anyone ever reach out to me about it or about anything specifically in it, as opposed to other bills which I hear a lot about. I think a lot of the lack of debate is a product of its balance and the collaborative process by which it's crafted. While it is the role of the appropriations committees to review and craft the budget, they are very inclusive in their process and engage closely with the "policy committees" for input on the sections of the budget that are in their respective policy areas. So, every member ends up with an opportunity to weigh in on parts of the budget that are important to them and make their case why this appropriation makes sense or why they think that appropriation does not. Consequently, the closest anyone gets to critiquing the budget is something to the effect of "there are some things in this budget that I don't like but I can accept, because there are many more that I think are critically important."

Some highlights from the budget as passed- Appropriates a total of \$8.3B, of which \$2.8B are state funds, \$1.9B are from the Ed Fund and \$3.6B are Federal Funds. Some specific policy areas:

- \$138M in investments in workforce development, general business/economy supports and community supports. Including VOREC grants and Brownfield redevelopment grants. This was mostly a product of my committee so it is

something I know a lot about and can go into specific grants in future articles.

- \$60M for housing, to support the unhoused, for affordable housing and for the "missing middle" housing. Specifically for building units and to support landlords in renovating currently vacant units.
- \$97M to support the broadband build-out. Much of this is going to CUDs, and I continue to urge all our communities to strongly consider joining/forming a CUD to make sure some of this money comes to our towns. Even though we have relatively good coverage, a CUD is a great opportunity to create competition in the broadband market.
- \$207M in specific climate change response initiatives. Includes \$80M for weatherization programs and \$25M for electrical upgrades for low- and middle-income family homes. \$45M for municipal energy system resiliency upgrades. And a number of new electric vehicle related programs. I would also add that climate change is a consideration in almost every appropriation and every committee at this point, so this is by no means not an exhaustive accounting of the climate change initiatives. I know our workforce development initiatives also took into account the sectors that we expect to see the most growth because of and to respond to climate change.
- \$109M for water and sewer related projects. Helping to update municipal systems and assist with the new 3-acre permitting and compliance.

As always feel free to reach out anytime about any of this or anything else. I keep saying in these articles that I want to restart my coffee hours and regret that I was unable to make the time while we were actually in session, but at the very least I hope to be able to now that we have adjourned and if I don't have to drive to Montpelier 4 days a week.

In more personal news, I will add that we are expecting our second baby (another girl!) next month, I am transitioning into a new career in real estate now that the session is over and I also plan to be knocking on your doors over the next few months as I start to campaign for re-election this fall (with one or both of the girls if my wife will let me!). So a lot of plans and a lot going on in the Nicoll household right now.

Hope to hear from you soon!

Logan Nicoll
State Representative
Ludlow, Mount Holly, Shrewsbury



SMITH
MAPLE CREST
FARM

2450 LINCOLN HILL
SHREWSBURY, VT 05738

GRASS FED / GRASS FINISHED BEEF

KNOW WHO RAISED YOUR MEAT, COME TO THE FARM FOR YOUR

* GRILL STEAKS	* GROUND BEEF	* KABOB MEAT
* RIB STEAKS	* SAUSAGE	* BRISKET
* SEASONINGS	* TALLOW	* MEAT BOXES
* ROASTS	* BACK & SHORT RIBS	* MARROW BONES
* PREMADE PATTIES		

OUR OWN VT MAPLE SYRUP ALL GRADES AVAILABLE

A Great gift no matter what time of year!

* GALLONS	* MAPLE CREAM	* MAPLE DRESSINGS
* HALF-GALLONS	* MAPLE CREAM CHEESE	* MARINADES
* PINTS	* COOKIES	* MAPLE SUGAR
* HALF-PINTS		* MAPLE CANDIES

WINTER STORE HOURS: SAT, SUN, MON 10 AM - 5 PM
TUESDAY BY APPOINTMENT
WED, THURS & FRI 10 AM - 6 PM

SHOP IN PERSON, CALL US, EMAIL OR ORDER ON-LINE TO BE READY FOR A QUICK PICKUP AT OUR FARM STORE. CURBSIDE AVAILABLE JUST ASK.

SMITHMAPLECRESTFARM.COM TELEPHONE: 802-492-2151

LETTERS TO THE EDITORS

Thank you, Fire Department!

We want to express our sincere gratitude to the Shrewsbury fire department (and the Wallingford and Clarendon departments who arrived later on the scene) for quickly and effectively putting out our barn fire in early April. The heart-felt kindness and support received from department members both during and after the event meant a great deal to us and is most appreciated. Much love and gratitude for who you are and all you do. ~Terry and Vickie



Greetings Shrewsbury Families,

I am thrilled to be able to serve our school community as the new Shrewsbury Mountain School Principal. As a community member, a parent of two students who have gone through this amazing school, and a passionate educator and leader in this school district, I am excited to join the SMS team this coming school year!

I have been a Shrewsbury resident since 2010 when I moved from New York and began teaching vocal music at Mill River Union High School. Twenty years ago, I married into the Cimonetti family that has resided in this town since the 1800s. My husband, Marc, attended SMS for his 4th and 5th grade years and proudly proclaims that those years were the most special and meaningful of his public-school experience. The history of Shrewsbury Mountain School is strong and the impact of the educational experiences for students has been long standing in our community and continues today. Our two daughters, Alaina and Adelynne, have also had an incredible elementary education experience at SMS and it has been a privilege to raise my family alongside you all in this town.

I have dedicated my entire career to public education and advocacy of fine arts programs as well as student voice. I am committed to building strong relationships between students, families and our community as well as dig in and help SMS with their commitment to education for sustainability. When we collectively work together and share in the educational mission to keep students first, the relationships are always richer, the learning always deeper and the experience of growing up in Shrewsbury that much more special. I am looking forward to nurturing the roots of this school's legacy as well as cultivate new ways to grow and propel us forward so that our students can soar in our ever-changing world.

I am so excited to connect with all of you more deeply in this new role. I really want to hear from our community so please reach out to me anytime!

*Kristin Cimonetti, Principal, Shrewsbury Mountain School
kcimonetti@millriverschools.org; 802-786-3995*

**NOTE:
NEW SHREWSBURY MOUNTAIN SCHOOL
PHONE NUMBER!
802-786-3995**



SHREWSBURY MEETING HOUSE OUTDOOR CONCERT SERIES

Please bring a Generous CASH contribution, your own seat, or listen from your car. Your contributions benefit the musicians and the historic Shrewsbury Meeting House.

For more info, please call Vicky or Paul at 492-3649



KRISHNA GUTHRIE BAND

Saturday, June 4 @ 5:00 pm

(Rain date: Sunday, June 5 at 5 pm)

Krishna incorporates elements of his musical family's lineage while adding influences from his own generation. A hard rockin', folkin' blues band!

Beginning at 4:30 pm, food served by Marble Valley Kitchen, cash only.

WILL PATTON ENSEMBLE

Saturday, June 18 @ 5:00pm

(Rain date TBA)

Drawing from Gypsy jazz and Brazilian choro among other world music styles, the audience is transported from Paris to Rio, and back to the front porch!



GYPSY REEL

Saturday, June 25 @ 5pm

(Rain date Sunday, June 26 at 5 pm)

Featuring fiddle, banjo, mandolin, guitars, bodhran, upright bass and stunning twin turbo vocals, playing high energy, stirring music rooted in the Celtic tradition.

SHREWSBURY LIBRARY

Library News Submitted by Joan Aleshire

LIBRARY & FOOD SHELF HOURS

Monday 10am-12pm

Tuesday 7pm-9pm

Wednesday 10am-5pm and 7pm-9pm

Thursday 7pm-9pm

Friday 10am-12pm

Saturday 10am-12pm

** MASKS: We're keeping them on for now, and ask that you do too, when in the building. Thank you for your continuing cooperation!

At the Annual Meeting, we elected our current officers for another year: JOAN ALESHIRE and LISA SHARROW: Co-Presidents; TRISH NORTON: Vice-President; GAIL HARTIGAN Secretary. Trustees who were elected to 3-Year Terms were: GAIL HARTIGAN, LISA SHARROW, and SARAH TITTERTON.

We're very sorry that our Student Trustee, MIGUEL LEVY, has resigned from the Board. Miguel has done important work as a trustee, helping re-build our Young Adult Collection, and we will miss him. Many thanks, Miguel, and good luck in all you do in sports, music, and schoolwork!

MANY THANKS to TIM STOUT for the informative poster about Forest Carbon on Small Family Farms that he brought to the Library. Please take time to learn more about Tim's research from this clear, comprehensive display. (You'll find it on the red table at the entrance to the Ben Perry Room.)

MANY THANKS TO ALL OUR FAITHFUL VOLUNTEERS. We can't keep the doors open without you! SPECIAL THANKS to FRED MICHELL for the on-going labeling project, which makes finding and shelving so much easier!

Coming Events Scheduled:

Friday, July 15 @ 7:30pm: Vermont filmmaker NORA JACOBSEN presents her documentary about Goshen poet RUTH STONE.

Saturday, August 27: Time TBA: ANNUAL STREET DANCE with MARCOS LEVY & THE NEIGHBORS' BAND @ The TOWN HALL/MEETING HOUSE

Continuing Programs via Zoom:

Sunday, June 12 @ 4pm: FAMOUS BOOKS BOOK CLUB: Second session on Dostoevsky's amazing Crime and Punishment. If you need a copy, please e-mail Joan: joanaleshire@vermontel.net.

Sunday, June 26 @ 4pm: SCIENCE BOOK CLUB: Best Science and Nature Writing 2021 (if everyone has finished

Entangled Life). Print and e-books will be available. Please let Margery Salmon know your preference: salmonm@vermontel.net.

New Books include:

**Dream Town* by David Baldacci.

**Riverman: An American Odyssey* by Ben McGrath.

**Bittersweet: How Sorrow and Longing Make Us Whole* by Susan Cain, author of *Quiet*

**The Investigator* by John Sandford, a Lindsay Davenport mystery.

**Freezing Order: A True Story of Money Laundering, Murder, and Surviving Vladimir Putin*, by Bill Browder.

**The Recovery Agent* by Janet Evanovich.

New DVDs include:

**Yellowstone: 4th Season*, with Kevin Costner.

**Judas and the Black Messiah*: The brilliant bio pic about the murder of Fred Hampton.

**Cyrano*, a new version of the old drama, with the magnetic Peter Dinklage.

**The Truffle Hunters*, a marvelous documentary about truffle-hunting dogs, gastronomy, greed, tradition, and mortality. Highly recommended!



**RIVERWOOD
LAWN CARE, LLC**

Fully Insured

Patrick Angstadt
802.770.0433
riverwoodlawn@vermontel.net

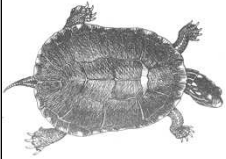
Mowing, Trimming
Spring and Fall Cleanups

FREE ESTIMATES

Northam Cemetery Association Annual Meeting

Wednesday June 29, 2022 at 7:00pm at Shrewsbury
Town Office **OR** Northam Fire Station.

Any questions, please call:
Catherine Carrara 802-492-6137



**Welcome to
Shrewsbury Outing Club's
67th year!**

The Shrewsbury Outing Club (SOC) is a volunteer nonprofit open to residents of Shrewsbury who sign up for membership. We lease some waterfront at the lake and maintain it for members. We also have occasional outings, provide swim lessons, work with lake owners on checking water quality, and help maintain trails in Plymbsbury. Note: we do NOT provide lifeguards.

A Family Membership to the SOC is available to any Shrewsbury resident, or landowner, who has paid the annual fee and signed the current waiver. A Shrewsbury family is defined as a family or individual residing, or owning property, at one address in Shrewsbury. Family members living at another address are considered guests and must be accompanied by an SOC member. If you wish to join for the 2022 season, please contact us at:

ShrewsburyOutingClub@gmail.com

for the paperwork and send your Membership Form accompanied by a check of \$45 (made out to "Shrewsbury Outing Club"), with a signed 2022 Membership and Waiver, by June 1st, to:

Shrewsbury Outing Club
c/o Chris Clarke, Treasurer
4431 VT Route 103
Shrewsbury, VT 05738

Membership Forms and Waivers can also be obtained by picking them up at the Town Office. Memberships last from this June 1 to June 1 next year. Your name will be added to the membership list posted at the lake and given to the security guard. After June 1, the list will be updated at the end of each week. You may be asked to leave if your name is not on the list.

Swim lessons with Marcos will be July 25-29 at 10am. Preregister at www.thenewlearningproject.com

Thank You,

Co-presidents: Gretchen Gould & Turiya Levy



Prepared to unfurl
Fiddlehead section tunes up
Nature's silent strings
Haiku and Photo by John O'Dowd

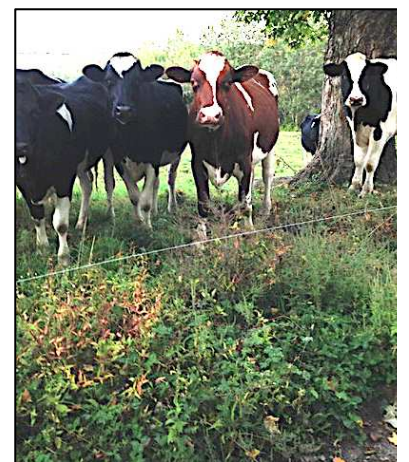


Gather for produce
Gather to produce new friends
Community store
Haiku and Photo by John O'Dowd



 SINGING
ON THE
SUMMER SOLSTICE
JUNE 21 2022
7PM OUTDOORS
 AT THE **MEETING HOUSE**

SEE THE SUNSET OVER BIRDSEYE!
WATCH FOR POSTERS FOR DETAILS
OR CALL JANET 802-492-3814 OR GRACE-3458



Natural gas board
Meats to discuss new prices
Offers up samples
Haiku and Photo by John O'Dowd

Shrewsbury Historical Society

www.shrewsburyhistoricalsociety.com

The first meeting of the Shrewsbury Historical Society after two years was held on May 15 at the museum. It was decided to open the Museum on Sunday, July 3 from 1-3pm and each Sunday, same time thereafter, including the closing on October 30. Future programs were discussed and information will follow.

Dues are due and remain as always:

Single membership \$10

Family membership \$15

Contributing member \$30

Life membership for individual/couple \$125

Please remit checks made out to Shrewsbury Historical Society and mail to:

Catherine Carrara, Treasurer

2544 Northam Road

Shrewsbury, Vermont 05738

The Society is reaching out to folks who just might want to be involved in our historical society and would take the position of Secretary for us. I need your help! Minutes must be taken at the meetings and having a computer would be a big help. Any questions please call Grace Brigham at 802-492-3458 or me at 802-492-3324.

The next meeting of the Society will be held on Sunday, June 5 at 1pm at the museum. ~Ruth Winkler

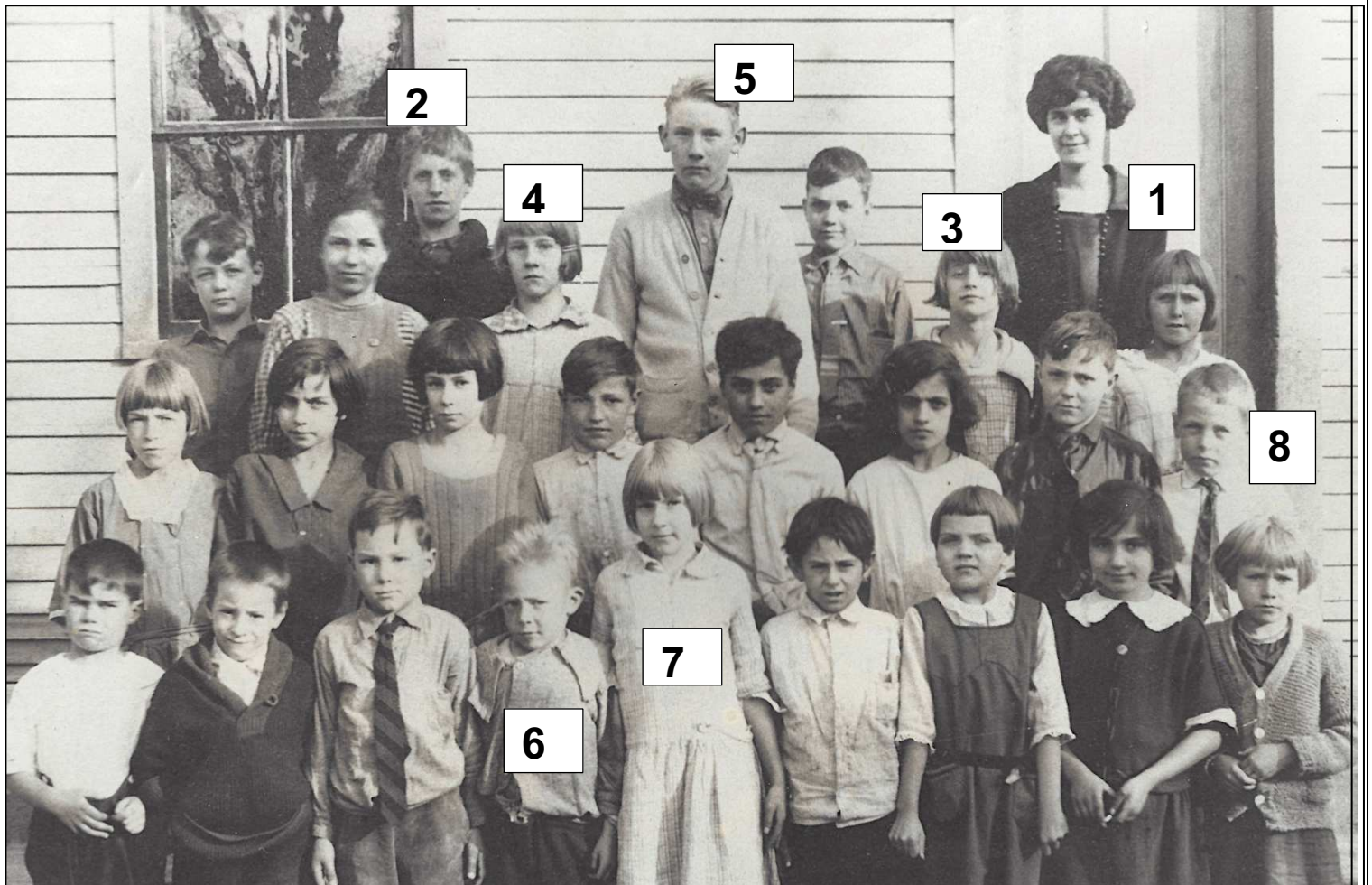
Shrewsbury Students: 1925

Once upon a time Shrewsbury had 15 school districts. Each hamlet had its own one-room school, and one teacher was responsible for educating all the children ages 6-16. The photo shows the students and their teacher in 1925. Just for fun, we have identified several for you:

- (1) Teacher Irene Hall-VanGuilder who became Lynette Over's grandmother!
- (2) Steve Korzun whose family ran a dairy farm where Evening Song Farm is now.
- (3) Stevia Korzun who left the farm at age 15 and married Keene Chaffee in Rutland. Their children Kim, Rick, and Suzy became Olympic skiers.
- (4) Edna Noyes (Martyn) married Dr. Martyn's son, Steve, and together with their son, Steve Jr., lived in the house right by the Historical Society Museum.
- (5) Leo Noyes
- (6) Arzy Noyes
- (7) Madeleine Noyes
Edna, Leo, Arzy, and Madeleine were siblings and lived in a house near the present gym at Spring Lake Ranch out back in the meadow.
- (8) Ed Cook had a landscaping business in the yellow house just south of the Cuttingsville bridge

The Historical Society sends best wishes to Shrewsbury's students, teachers, staff, volunteers, and parents for a wonderful summer vacation.

~Grace Brigham



The Shrewsbury Community Church



Compiled by Sue Ransom-Kelley

The Shrewsbury Community Church Welcomes all Visitors. All are welcome to join us for Sunday Services at the Center Church, upstairs at the Shrewsbury Meeting House. The sanctuary is large enough to easily maintain safe social distancing. It is always uplifting! We can meditate in the quiet and beauty of the sanctuary, enjoy the beautiful organ and piano music, and hear an uplifting message from our Pastor Wendy Savery. Refreshments are served following services. You may also request the virtual service at roxramah@gmail.com.



Lessons Learned In Life Inc.

"Today was a Difficult Day," said Pooh.
 There was a pause.
 "Do you want to talk about it?" asked Piglet.
 "No," said Pooh after a bit. "No, I don't think I do."
 "That's okay," said Piglet, and he came and sat beside his friend.
 "What are you doing?" asked Pooh.
 "Nothing, really," said Piglet. "Only, I know what Difficult Days are like. I quite often don't feel like talking about it on my Difficult Days either."
 "But goodness," continued Piglet, "Difficult Days are so much easier when you know you've got someone there for you. And I'll always be here for you, Pooh."
 And as Pooh sat there, working through in his head his Difficult Day, while the solid, reliable Piglet sat next to him quietly, swinging his little legs...he thought that his best friend had never been more right." ~A.A. Milne

Sending thoughts to those having a Difficult Day today and hope you have your own Piglet to sit beside you ❤️

In addition to our regular services led by Pastor Wendy we have enjoyed guest ministers this spring Reverend Holy Ross and Reverend Paul Sangree.

Shrewsbury Community Church Calendar:

All Services are at the Center Church and Meeting House

- Sunday May 29, 10:30am -Worship Service led by Pastor Wendy Savery
- Sunday June 5, 10:30am Worship & Holy Communion led by Pastor Wendy Savery.
- Sunday June 12, 10:30am -Worship Service led by Pastor Wendy Savery.
- Sunday June 19, 10:30am -Worship Service led by Donna Smith.
- Sunday June 26, 10:30am-Worship Service led by Pastor Wendy Savery.

Community Food Shelf

Free Community Food Shelf at the Library in the front entry way. Those in need are welcome to help themselves any time the Library entryway is open. Limited hours are: Mon 10am-12noon; Tues 7-9pm, Wed 10am-5pm; 7-9pm, Thurs 7-9pm, Friday 10am-12pm & Saturday 10am-12pm

Food Delivery and Assistance If you are unable to get to the Food Shelf at the library in Shrewsbury, we will deliver groceries to you. If you need items which are not available on the shelf, we can provide grocery gift cards. Call Karen at 802-558-5991 or Sue at 802-661-8399 or 802-492-3738.

Community Needs

Wedding, Funeral or Memorial Service Requests: Contact Donna Smith 802-492-3367 or Sue Kelley 802-492-3738, 802-661-8399.

Community Helping Hand Requests: Contact Donna Smith 802-492-3367 or Sue Kelley 802-661-8399, 802-492-3738 or Karen Lorentz 802-558-5991. Shrewsbury residents experiencing financial hardship. Assistance can be given for basic needs such as food, heating, gasoline, etc. If you or a neighbor are in need please let us know!

Pastoral Care, Home, Hospital Visitation, Outreach Requests: Contact Roxanne Ramah 802-492-3675 or Ruth Kinne 802-775-5318.



PVF Services LLC

Excavation, Trucking, driveway repair, site prep, building removal, brush grinding and much more!

Neal and Chad	1368 lincoln hill
Cell 802 236 8105	Shrewsbury Vt, 05738
Office 802 492 3364	sharrowmaple@gmail.com

The Colors of Summer: Yellow, White, and Green

June has taken us from the early yellow green foliage of Spring to the more mature dark green canopies that will grace the 6.5 million acres of Vermont's forest for the remainder of the summer. The goal of course will be to keep that color over the growing season in spite of threats on several fronts.



Yellow as found in this article is "map yellow". It is the constantly growing Emerald Ash Borer circles found on the Vermont Invasives

map. They are yellow in color and take up most of the Vermont invasives map with their ten-mile possible infestation radius from a known EAB outbreak. The invasion continues to grow and with it fortunately some community interest. Several people this winter expressed interest in inoculating their ash, several more were concerned about possibly having infested trees already on their land, and others have begun asking what is the town going to do. A May 6 Valley News article by Claire Potter provided some insight. The article recognized that the central Vermont area is now under threat and noted also that towns have been somewhat reluctant to take direct action (removal or inoculation) until a confirmed sighting occurs in their town. However, the timeline is short between a confirmed infestation and taking action. It takes about three years for the symptoms to really appear, followed by the creation of a very brittle hazardous ash tree, and finally a dead one by year five. Several towns are now comparing the relative costs of ash tree removal versus inoculation. Elise Schadler, Vermont's Urban and Community Forestry program manager has two recommendations regarding EAB management. 1. Leave ash in the landscape when possible and 2. remove potentially hazardous trees before the infestation in your area is too far along. Both require planning.

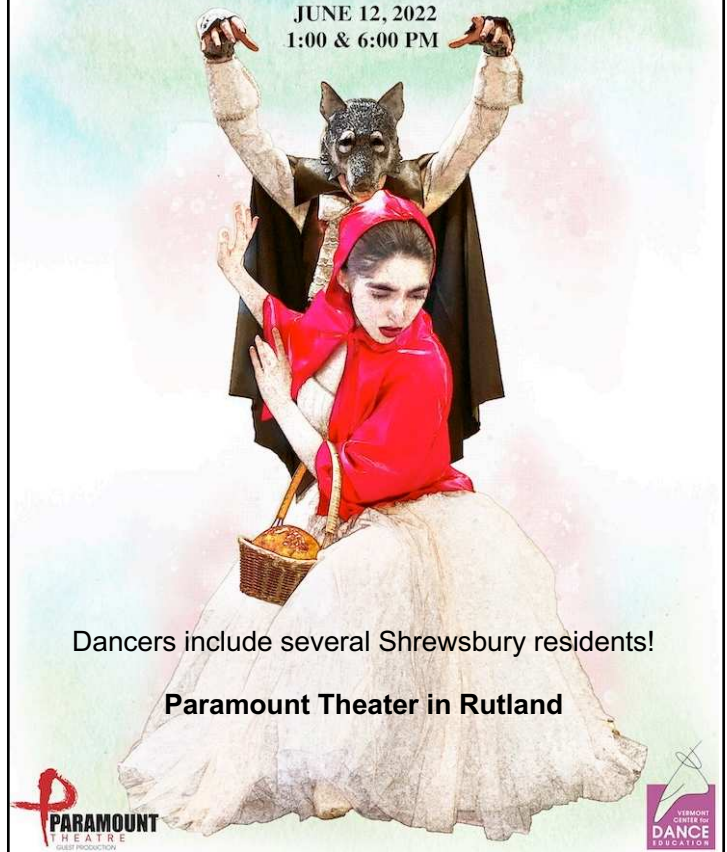
On a brighter note, there is at least one color you can smell – white. What a beautiful day it is when the cut and split firewood for next season gets dumped in the driveway/lawn. It is freshly cut, white colored, full of moisture, and smells of wood. With proper stacking and aeration over the summer the white will turn to grey, checks will show up on the ends of each piece as water evaporates, and one can anticipate the smell of burning wood and white chimney smoke for another winter. This firewood mystique has lingered with us since colonial days and remains today as firewood is still the most produced timber product in Vermont on an annual basis and easily exceeds wood pellets or chips as a fuel source.

And finally comes the green. It is everywhere covering our landscape with green leaves of all shapes and sizes that keep food webs active as sources of food for countless insects and then for the birds that feed on them. Balance is the key to keeping things green and this summer an in balance will create some brown spots. Castleton, along with areas around Lake Champlain will be defoliated by spongy moth (formerly called gypsy moth). Last year's dry summer lowered the presence of a naturally occurring fungus that kept these voracious caterpillars under control. Hopefully, the wetter Spring will increase fungal effectiveness and serve as a control minimizing the brown and maximizing the green of our landscape.

~Submitted by Gary Salmon, Tree Warden

LITTLE RED RIDING HOOD

JUNE 12, 2022
1:00 & 6:00 PM



Dancers include several Shrewsbury residents!

Paramount Theater in Rutland



- ◆ Handmade and Local Goods
- ◆ Artisanal Foods
- ◆ Gardening and Home Decor
- ◆ Antiques, Toys, and More!

Hours: 11am-7pm
5304 VT Route 103, Cuttingsville
www.facebook.com/WallysCorner

(516) 522-4174
hello@wallysvt.com



BOOK REVIEWS

- ******Fantastic*
- **** *Compelling page turner*
- *** *Enjoyable*
- ** *Just O.K.*
- * *Not recommended*



**She Has Her Mother's Laugh:
The Powers, Perversions, and Potential of Heredity**

by Carl Zimmer

Writing a review of this book was similar to my experience in reading it. Daunting. I found it so all-encompassing that I was lost. Plus, all of those other, really important reviewers--The Atlantic, The New York Times--lauded this book to be "magisterial" and "extraordinary." Hard to follow that. Yes, writing a review mere paragraphs long will be difficult.

She Has Her Mother's Laugh is 574 pages long--656 if you include the 81 pages of the glossary, notes, bibliography, acknowledgements, and index. Some topics were both interesting and grotesque. Included were the 100 years of infamous inbreeding at the Schoenbrunn Palace in Vienna, Austria, that produced hunched backs, deformed jaws, pigeon chests, and mental illness--just to keep the royal bloodline intact and not tainted by any outsiders. Not being able to give birth was another symptom of inbreeding. As a result, the royal Habsburg's bloodline vanished. Included also was the cruel story of The Vineland School (made me think of our own Brandon Training School, right here at home). Eugenics, of course, is another topic of inclusion. And also the experiments of Gregor Mendel, a young Austrian priest, who cross-pollinated 10,000 peas by hand to discover that... "the initial generation of half breeds was constantly yellow." And so on and so on, ad nauseum. The magnitude of the subject matter was ruthless--how could it not be, really?

I had to give She Has Her Mother's Laugh at least 4 stars, though, because of the scope of Carl Zimmer's achievement, but I can't, in all honesty, recommend this book to you. I wanted to, but I just didn't enjoy reading much of it.

~Reviewed by Marilyn Dalick (Science Book Group)

LAUREL GLEN NEWS

A call for volunteers

There are many signs of spring. The arrival of maple season, the first robin. For many in and around Cuttingsville, the day that the John Bowman statue in front of the Laurel Glen Mausoleum emerges from its winter hibernation.

The highlight of our year in 2021 was the well-attended dedication ceremony for our Vermont Historic Roadside Marker followed by a tour of Laurel Hall and its grounds. We have another big event planned for 2022, in collaboration with the Vermont Old Cemetery Association. On Saturday, August 6, VOCA members from around the State are planning to gather at Laurel Glen Cemetery and spend the morning sprucing up the grounds – repairing broken headstones, straightening leaning ones, cleaning monuments and more. The party will work from 8 AM to noon. Local volunteers – readers of the Times – are needed and solicited to help with the cleanup. VOCA and Laurel Glen will provide the materials. Come by even if you can't assist with the physical work, to welcome and thank these wonderful volunteers!

That afternoon, we will open Laurel Hall for a tour to reward and thank the work party. Others will be welcomed as well. The word for the day is docent – defined as “a person who leads guided tours, especially through a museum or art gallery.” We are looking for volunteer docents who would be available and willing to assist giving tours of Laurel Hall. Primarily right now on the afternoon of August 6, but also on other days in the months and years ahead when we will open the Bowman Mansion for tours. If you are interested in being a volunteer, please contact me or any other member of the Laurel Glen board.

Barry Griffith, Trustee
bgriffithvt@gmail.com 492 3573

The Struggle Against Invasive Plants Continues.....

Your Conservation Commission has embarked on a new season of invasive plant removal, starting with Garlic Mustard, invader of woodlands. We are working hard to keep it out of our forests where it would proliferate, replace lovely native plants and dominate by releasing a substance that harms the mycorrhizal network in the soil and thus stunts the growth of other plants.



Respect • Protect • Enjoy

The roadsides are where you will see us most often, as the roads are avenues into and around town for plants and seeds as well as for us. We will be focusing on the same set of plants as in the previous few years, depleting the existing “seed bank” and denying new seeds the chance to encounter soil. It has taken patience and perseverance to work from the simple logic of “no seeds, no plants, eventually” but we have seen results now with areas of garlic mustard, chervil, and the poison parsnip.

I recently had a conversation with a friend who commented that people often say “There must be a reason” for the appearance of all these invasive plants, implying that there is some hidden benefit about them, or an important message for us. Well, there is a reason why they are here: namely introduction by humans and the massive human disturbance of so many corners of the natural world. They are not good to or for other plants, or insects, or birds. Some invasives provide food for pollinators but none for the larvae so important for baby birds to survive.

Sure, you can eat garlic mustard; knotweed too. There are many native plants that are edible and nutritious and part of ecosystems that have evolved over long periods to be in relative harmony. Learn about and try some of these.

My friend and I agreed that Japanese Knotweed is an amazing plant that demonstrates a mighty life-force. We can indeed make use of it culinarily and medicinally, but that doesn't mean it should grow EVERYWHERE, ruining streambanks, and crowding out everything else.

Invasive plants are like people who use their given talents to amass all to themselves, accumulating fabulous wealth and the power that goes with it, and are never satisfied, always wanting more. Then they start taking more, oblivious to the rest of us and uncaring of the means they use to take it. Invasives have no conscious motive, they are not evil, they are just out of place and without natural constraint.

We will be calling for volunteers to join in on removals of invasive plants in various places around town in the coming weeks and months. I have a list of volunteers who have agreed that I can alert them to days and times. They are the BEST! If you would like to be added to that list, please let me know, as we would be happy to have you!

Thrilled in fact! Days and times will vary, reflecting different schedules.

Submitted by Pam Darrow



Shrewsbury Conservation Commission's Trail Camera Picture of the month



Two bears explored an old beaver dam on April 26, captured by Linda Shelvey. One of the yearlings decided to tweak my cameras alignment. A metal box to protect your camera is a very good investment!

Do you have a wildlife picture to share? A track for us to identify? Send your trail cam, phone or DSL camera picture to Linda Shelvey, Lpurdyshel@gmail.com. Please include your location in your email to Linda, so we can include your data in our Wildlife Road Crossing Project.

Submitted by Linda Shelvey

Volunteers Wanted



RSVP and The Volunteer Center is starting a new walking program. The program will address social isolation by helping individuals remain living independently while aging in place. The program will support bettering an individual's physical and mental health through walking.

Volunteer Walking Club Leaders Needed!

Duties:

- **Pick a place & time to walk twice a week. Provide the location and time to RSVP to provide to the community & participants.**
- **Lead the walking group on a walk for approximately 30-60 minutes.**
- **Have all participants fill out a simple informed consent form when they join.**

For more information please contact us at:

Phone 802-775-8220 x101

Email: maryesarsvp@gmail.com



CUB REPORTERS

Trout Life Cycle

We received our trout as eyed-eggs in January and counted the number of eggs using enlarged images of our breeder baskets; we had 93. Most of the eggs hatch within a week; this year we had one hatch the day they

arrived. Over the next several weeks, we observed the alevins' growth. We learned about the different structures of a brook trout and the function of each. By the middle of February, our alevin were starting to "swim up." This eagerly anticipated event marks the transition of our brookies from alevin to fry. They are no longer getting their nourishment from the yolk of their egg sacs but begin to eat food we add to the tank.

From the start, we test the water each day and record the water's pH, temperature and levels of ammonia, nitrite and nitrate. Understanding the role of the nitrogen cycle in our tank is important to the health of our fish, especially once they are feeding.

In early June, we will release our fry into the stream behind Pierce's Store. At the release site, we observe the structures of the stream, the macroinvertebrates present and test the water. *Comic by Adelynne with help from Emma & Ryan; Trout Life Cycle Diagram (w/o descriptions) by Abigail & Davis*

Trout Observations:

Selections compiled by Cora & Mason from our Data Sheet

Jan 12: A second egg has hatched and 1 appears to be about half way hatched. Egg casing needs to be removed.

Feb 11: The two fish we are watching are still twitching. Fish are active and starting to swim up. Yolk sacs are pretty small (have decreased).

Feb 17: At least 4 of the trout look unhealthy, including the twins (conjoined trout). Also, on some of the trout you can see the fins. A group of them are swimming in place facing the front (into the current).

Mar 1: One trout jumped out of the breeder basket and is resting at the bottom of the tank. Very active and no yolk sac. Swimming in current.

Mar 8: Some trout in the big tank are [larger], their fins more visible, their markings are visible, the egg sac is gone, about half an inch long and you can see them open and close their

Trout LIFE Cycle

Fertilized (eyed)

Egg

Alevin

Fry

Juvenile

Adult

<p>It starts with the eggs</p>	<p>It's time</p>	<p>The Life of Skippy the Brook Trout to hatch!</p>	<p>Skippy is Out!</p>
<p>This stage is the egg stage where the fish develop their body and head</p> <p>Oh NO!!!</p>	<p>When eggs are ready to hatch they will squish out and start to swim.</p> <p>CRASH!!</p>	<p>Skippy is showing that sac fry will swim around when young. (Not done)</p> <p>I'm turning up the heat to fry!</p>	<p>When Brook Trout become fry, the sac goes away because the fish uses it all up and all their fins develop mostly.</p>
<p>Skippy and Fishena are showing that sac fry, when learning to swim, will bump into each other</p> <p>Fry Time</p>	<p>Fish normally bump into each other so Skippy and Fishena are fine (Probably)</p> <p>NOW SKIPPY'S BIGGER!</p>	<p>I'm an adult so lets DANCE!!!</p>	<p>Now Skippy is older and can take care of himself.</p>
<p>Skippy is showing all things fry can do!</p>	<p>Now Skippy is older and can take care of himself.</p>	<p>Now Skippy is an adult and will live his fishy life!</p>	<p>This was by Adelynne Cimanett with help from: Emma Bilodeau and</p>

Mrs. McDonough performed solution tests for the ammonia and nitrite (in addition to paper test strips and updated totals.) More fish were removed from the breeder baskets and released to the main tank.

Apr 6: Swimming around in the middle of the tank, hanging out in the space, getting bigger in size (1.25 inches). When food is sprinkled on top, the fry dart to the surface. Feeding slows after a minute or two.

~Submitted by Mrs. McDonough (5/6 classroom teacher)



Green Up Day Is a Huge Success

The Governor's challenge this year was for every town to "Green Up" every road. That challenge was not necessary in Shrewsbury because, every year, Shrewsburies walk all **60 miles** (both sides) of our Town roads to pick up litter that has accumulated over the past year. This year was no exception.

On May 7, **102** people, young and old, gathered early at the Meeting House for wonderful homemade pastries, doughnuts, juice and coffee, and to inform the coordinators which roads they would "green up". Quickly the map filled with assigned segments of roads and families left with an armload of green bags, showing that, again, Shrewsbury takes pride in seeing its roads all cleaned up for the warm season ahead.

It was wonderful to see whole family groups and lots of kids out for the morning taking part in this statewide ritual which started 51 years ago under Governor Deane Davis. Since that first event, the first Saturday in May is Green Up Day throughout Vermont. Vermont is the only state without an "adopt-a-highway" program, instead maintaining this hands-on, grassroots tradition of community residents picking up the roadsides on their local town roads and State employees cleaning up the State highways. During the first years, even portions of I-91 (newly const ructed) were closed to traffic so folks could "green up" the federal highway.

This year **101** bags of trash, **6** tires and **1,850** bottles and cans were collected and delivered to the Transfer Station. The bottle redemption money (\$111) will help support next year's Green Up and the ongoing work of the Conservation Commission.

Unfortunately, some people still think it is ok to throw trash out the window. In a couple of locations, it appears some folks unloaded multiple bags of household trash into wooded locations instead of bringing them to the transfer station. However, this illicit dumping seems to be less and less as years go by.

A big **THANK YOU!** from Pepe le Shrew and the Conservation Commission to all who participated in this year's Green Up as our clean Town roads transition from verdant spring green to summer. ~Mark Youngstrom for the Shrewsbury Conservation Commission



Reinbow Riding News

We're off and running at Reinbow Riding Center! Maybe not as fast as this year's Kentucky Derby, but for our visiting school children it's plenty fast enough. We take it slow during the first lesson when we introduce kids to their horses. Above Mason and Fonda are becoming fast friends as she trustingly follows while he leads her around the ring. A good brushing will follow, almost as good as a massage.



Although not seen in the photo, it takes three volunteers per rider to make all the pieces work and provide a safe program for kids and horses. This season we will be providing lessons to students from ten area schools as well as other riders. In order to do this, we're

always looking for volunteers to assist with the program. If you're not into horses or kids, but would like to help, there are many other tasks from clerical work, fundraising, grounds maintenance, photography and videotaping--you name it, I bet we need to do it. We can also accommodate those looking for community service hours. On the fence? Give us a call and set up a visit for a firsthand look at what we do.

Please visit our website: reinbowridingcenter.org, and follow us on Facebook, Twitter @ReinbowRiding and Instagram @reinbow_riding_center. Contact us at programs@reinbowridingcenter.org or 802-236-2483 to inquire about lessons. Contact janetupton@reinbowridingcenter.org for information about volunteer opportunities. ~Janet Upton

~~~~~

## Sno-Bird News

The Sno-Birds had their May meeting and election of officers. The officers stayed the same as last year. We discussed our summer work days which there will be one a month, which will be the Second Sunday. Times and meeting places will be posted on our web site and face book page. We are also having a sled and money raffle to help defray costs of the new drag and fuel costs, we have decided to sell Raffle tickets. \$100 per ticket – only selling 200 tickets.



- ◆ 1st Prize – 2023 Ski Doo MXZ Sport 600 EFI OR \$8,000 Cash
- ◆ 2nd Prize – \$1,000 Cash
- ◆ 3rd Prize – \$500 Cash

If interested in buying a ticket, please contact Roy Arthur @ 802-779-5228 for details. Good luck!! ~Roy Arthur



**Mark your calendar!**  
**Shrewsbury Day**  
**September 17, 2022**

### GRADUATES

High school and college graduates  
**send photos**  
for the July issue of the  
*Times of Shrewsbury*

### WANTED

Someone to mow the Shrewsbury Center  
Cemetery for summer months  
Contact: Donna Smith 802-492-3367

### FREE TO A GOOD HOME

COMPANION 5000-Watt Electric Start  
Portable Generator with six month old battery, also with  
Disconnect Switch and Cord  
GENERAC Power Transfer Module w five, 15A circuits

Contact: Rich Biziak  
(802)-492-2255  
[rbbvt05@gmail.com](mailto:rbbvt05@gmail.com)



Rhubarb is a highly nutritious seasonal perennial. It also has had a long history as a sought-after medicine. Observed by Marco Polo growing around the hillsides of present-day Beijing, it entered international trade and became four times as expensive as Saffron in 16th Century France.

Rich in antioxidants, low in sugar, and high in fiber, rhubarb is a wonder plant.



Rhubarb made a wonderful centerpiece to our Harvest of the Month cooking program with Ms. Bonafine's K/1 class! We prepared Strawberry Rhubarb Pie with the 15 young bakers at the Shrewsbury Mountain School this past May.

The students mixed up pie dough, rolled it out, prepared the strawberry rhubarb filling, and created personal sized pies to take home for baking!

Though their pies weren't ready to eat in school, the students were treated with vanilla ice cream and pies Scott Courcelle prepared for the class. These students are well along their culinary journeys, and we can't wait to cook with them again next year!



For more information about SAGE contact Stephen Abatiell at [educate.sage@gmail.com](mailto:educate.sage@gmail.com), Joan Aleshire at 492-3550 or **Error! Hyperlink reference not valid..** Follow us on Facebook for up-to-date event details at Shrewsbury SAGE.

*Submitted by Steve Abatiell*

## YANKEE HOME MANAGEMENT



Property Management and Maintenance

[yankeehomemanagement.com](http://yankeehomemanagement.com)

802-259-3064

MT. HOLLY, VT

Keith Hawkins  
PRESIDENT

Driveway Grading / Ditching  
Site Work / General Excavation  
New Lawns / Ponds  
House Sites / Septic Installations  
Land Clearing / Driveway Installations

KEITH Hawkins  
president



**HAWKINS**  
EXCAVATION

Mount Holly, Vermont

802 558.3082



2450 Lincoln Hill Rd  
Shrewsbury, VT 05738  
802-492-2151  
[SmithMapleCrestFarm.com](http://SmithMapleCrestFarm.com)

Check out our Farmstore !

### Ground Beef

\$ 6.75 lb Ground Beef or  
\$81.00 Bakers Dozen of Ground Beef  
(13 1-lb pkgs = \$6.24 lb)  
or pickup 1 of our many steaks

### VT Maple Syrup

\$25.00 1/2 Gallons

Grassfed-Grassfinished Beef  
Pure VT Maple Syrup &  
Maple Sweet Treats

YOUR TICKET TO BETTER HEALTH

Sparkling Imaginations for Over 22 Years!

Thrive Center  
OF THE GREEN MOUNTAINS

Chiropractic Care, Applied Kinesiology,  
Therapeutic Massage/Bodywork,  
Holistic Health Education, Nutritional  
Supplements, Coaching, Worksite Wellness



Joseph P. Donohue, DC



Lisa Marie Donohue, MA, LMT

Serving the Community with Excellence and Compassion Since 2000

68 South Main Street Wallingford, VT • 802.446.2499  
[uthrive@vermontel.net](mailto:uthrive@vermontel.net) • [thriveinvermont.com](http://thriveinvermont.com)

### Crown Point Road Association Outings

June 5: Meet at 10:30am at the McCuen Slang Fishing access on Rt 125 in the town of Addison. Bring a lunch. We will go by car along the Crown Point Road through Bridport, Shoreham and Whiting. Points of historic interest will be discussed. For more info call Jim Rowe at (802) 434-7415 or email [mtinsidemaple@GMAVt.net](mailto:mtinsidemaple@GMAVt.net)

July 9: As part of the annual weekend of events to celebrate the historic battle in Hubbardton, and as one of the event's regular attendees, the CPRA will have a booth on Saturday to meet visitors. Come attend the event and support your organization at the re-enactment. Admission fee for the weekend's events will be \$6 per person, per day. For more info, call the Battlefield Welcome Center at (802) 273-2282



We welcome tennis players to use and enjoy our tennis court this summer. The court is just west of the home at 7983 Cold River Road. Extra racquets and balls are in the red shed adjacent to the court. Come anytime—no need to call!! ~Taffy Maynard 773-2087



### THE NEW LEARNING PROJECT CHOOSING TO EXPERIENCE OUR POTENTIAL

**MUSIC LESSONS -- Guitar, Piano, and more**  
**RED CROSS COURSES -- First Aid, CPR, Lifeguarding**  
**SWIMMING INSTRUCTION**  
(More services at website)

**STUDIO IN CUTTINGSVILLE VT**  
[www.TheNewLearningProject.com](http://www.TheNewLearningProject.com)  
[TheNewLearningProject@gmail.com](mailto:TheNewLearningProject@gmail.com)  
802.492.3208

**Marcos Levy**  
Instructor with over 30 years  
of Experience

# KRUEGER ENGINEERING, INC.

Septic System Design  
Subdivision Permits  
Structural Engineering

Arthur G. Krueger, P.E.  
802-492-3653

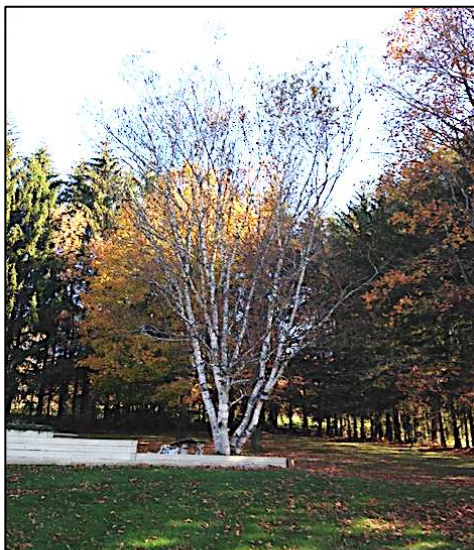
Shrewsbury, VT  
[www.KruegerEngineeringVT.com](http://www.KruegerEngineeringVT.com)



### Bone Builders

9-10am  
Every Tuesday and Thursday  
at the Meeting House on Lottery Road  
Free weights and instruction

Join us to improve your  
Bones, Balance, and Strength



Denuded of leaves  
Spectral birch shows her bare limbs  
Warm Spring will clothe her  
*Haiku and Photo by John O'Dowd*

# MELER & SONS

## 802-492-3931

- Official state inspection center
- Call for appointment
- Snow plowing - sand & salt available
- Lawn care
- Small excavating
- Call for estimates

ALSO:  
RUTLAND &  
SURROUNDING  
TOWNS

220 Stewart Lane, Shrewsbury, VT 05738  
(Off Town Hill Rd., 1/4 Mile from Rt. 103)

Shop: 802-492-3931 | Jon: 802-353-4536 | 802-558-1958 | 802-558-2123

# SEASONAL RENTAL HOMES SOUTHERN VERMONT



## We have you covered.

Engel & Völkers Okemo provides regional real estate expertise, enhanced with in-house marketing and our global network of 900+ brokerages. The result is a custom, full-service approach to elevate your listing.



### 91 PROSPECT RIDGE, CLARENDON

Charming, spacious, and dressed in subtle luxury, this three bedroom, three bathroom colonial is New England at its finest.

Available Jul. 1, 2022 - Nov. 15, 2022  
\$4,000/mo. + deposits



### 104 OLD COUNTY ROAD, MOUNT HOLLY

Looking for a winter rental close to the slopes and away from the crowds? This three bedroom, four bathroom log home on five acres offers secluded beauty and easy access to Okemo Mountain.

Available Nov. 15, 2022 - Apr. 15, 2023  
\$25,000/season + deposits



**Gail Beardmore · Owner/Broker**  
Engel & Völkers Okemo  
126 Main Street · Suite 1A · Ludlow · VT 05149  
+1 802-975-0338  
Okemo@evrealestate.com

©2022 Engel & Völkers. All rights reserved. Each brokerage independently owned and operated. Engel & Völkers and its independent License Partners are Equal Opportunity Employers and fully support the principles of the Fair Housing Act.



**ENGEL & VÖLKERS®**

## News From Pierce's Board

The next meeting of Pierce's Board will be held on Wednesday, June 29 at 5:30pm in the garage (please note day and time change). Board members have been very busy these last few months, particularly with their committee work. A summary of that work is listed below:

- Building and Grounds Committee - Mark Youngstrom and Jeff Monder serve on this committee. In the past month, Mark worked to get the house fixed up for new tenants (clean muck out of the basement, haul junk to Hubbards, replace smoke detectors, repair windows, etc.). Jeff oversaw the purchase and installation of a new computer (much needed). Stephen Estock volunteered to prune the apple trees (thank you Stephen!), Orville's crew was engaged to tidy up the grounds, and a painter was contacted about painting the store. Flower boxes were planted by Connie Youngstrom and Lana Vanucchi donated a new picnic table. Bring on Spring!
- Operations Committee - Debbie Schoch, Ed Hemmer, Larry Abelman, and Bob Knudsen serve on this committee. Larry has used his retail experience to help the store save money on purchasing, advise on product placement, and design new signs and mugs. Debbie has written a new charter for the committee and will be improving our training, recruitment and retention of volunteers. Based on the recommendations of this committee, we are excited to announce that, beginning June 1, shoppers will be given the opportunity to "round-up" their purchases to support the equipment fund for the store.
- Events and Fundraising - Phyllis Wells, Lana Vanucchi and Jeff Monder serve on this committee. They have been busy creating fun new ways for us to gather at the store while also raising money to support the bottom line. A partial list of the events planned for this summer include:

### Friday, June 24, 4-6pm

With summer officially underway, we'll be sampling rosé wines with Sandy Bragg—a classic warm weather libation.

### Friday, July 22, 4-6pm

Beer tasting with Josh and Amy Ridlon - their very own brand of "Liambro Tasty". Discover their wonderful craft beers and the legends behind them

### Saturday, July 30, 11-2pm

Blueberry Festival - selling Shrewsbury blueberries and all good things blueberry

### Saturday, August 27, 11am-2pm

Shrewstories in the Garage!! Come and hear factual stories from your neighbors. Theme to be announced in the next issue of the *Times*.

The Board is especially proud of Pierce's mission to support other Shrewsbury businesses. In the first four months of this year alone, the store has paid out over \$14,000 to Shrewsbury residents for services and goods. Shopping at Pierce's is good for our community!

See you at the Store!

~Submitted by Lily French, Board President

## Time to Welcome our Summer Songbirds

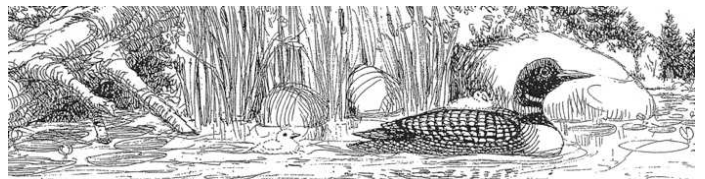
Summer is finally coming and with it songbirds are nesting and raising young. There are a few things we can do to help them.

One of the first things is just to be observant. When working around the house, keep an eye out for a nest in a low bush or in the grass. Sparrows, for example, like to nest in a brush pile or tangle of brambles, chickadees and woodpeckers in a hole in a rotten tree. Give them a couple of weeks to get their young out before you fell the tree or do the big clean up. When walking in the woods, watch for a wood thrush nest with its blue eggs or an ovenbird (white eggs with reddish brown spots) tucked behind a log.

Phoebes like to nest on rafters or corners of porches, barns, and garages from which they dart out to catch bugs. They'll make many messy nests, but you can encourage them to nest in a good spot by putting a small platform up under an eave you'd like them to use. If you have bluebird houses, be sure to clean them out now - and check them periodically if you don't want wrens, tree swallows, or mice to take them over before bluebirds can settle in. Male wrens are active little fellows, stuffing twigs into as many bluebird boxes as they can in hopes a female will choose one of them. It's nice to provide nests for wrens, but they can do with only one, not four or five. If you want bluebirds as well, you can remove some of the wren's surplus sticks.

If you feed birds when bugs or seeds are not around, take those feeders down now. And not just because bears or squirrels may raid them. Cowbirds come to feeders and then lay their egg in the nests of other birds. Their babies grow faster and larger than those that belong there, taking their food or pushing them out of the nest. Your feeder also attracts blue jays to backyards when they would normally disperse to the woods. Blue jays are aggressive predators and a particular threat to robins and songbirds around houses. They wait for a robin or other bird to leave its nest, then swoop in snatch and eat the eggs - and even the young. Protect all these nesting songbirds - our feathered friends will thank you.

*Submitted by Jonathan Gibson*



**Two loons have arrived at Spring Lake!**

**Times of Shrewsbury**  
**In COLOR online at**  
**[www.shrewsburyhistoricalsociety.com](http://www.shrewsburyhistoricalsociety.com)**



# NEWS FROM PIERCE'S STORE

## 802-492-3326

Bob Knudsen, Manager



Happy June, everybody! There are a lot of exciting things coming up for the entire town, and we are no exception!

### CREEMEEES

Let's get the big one out of the way first: Creemees. At the time of this writing, the creemee machine is not functioning, so our intended Memorial Day opening for serving those is in doubt. We are working diligently to

try to find service for it, but it is a highly specialized machine and it has been difficult to find experts who are qualified to repair it for us. We are keeping our fingers crossed and hoping for the best!

### UPCOMING EVENTS

Our next **wine tasting** will be hosted by the incredibly talented Sandy Bragg on June 24, so be sure to stop by. We are also planning some other events later this summer, including a **beer tasting** and the Blueberry Festival, so stay tuned for future dates on those! But don't wait to stop in for an event, we have put a couple of tables out on the porch if you want to come grab a **snack or lunch** and hang out, and we have more food options than ever with Vermont Bliss, Button Hill Bakery, and our very own Rob Jaimes beginning to cook for us weekly!

### NEW ITEMS

We have a number of new items in the store if you haven't stopped by in a while, including the return of bulk oats and sugar! Our friends at the South Royalton Market have graciously donated nearly 3 dozen bulk bins, so if you have suggestions for what to fill them with, please do not hesitate to let us know, we are always open to suggestions. We have also begun to carry some incredible granola and oat-based products from Back Roads Granola, based in Brattleboro. There are many options, including maple cranberry, dark chocolate, and just oats, as well as a whole host of others. They are all

gluten free, organic, and vegan, so no worries if you have a specialty diet that includes any of those!

Produce is also starting to have some more variety, though we are still fairly early in the season for many things. Our neighbors at Evening Song have been sending over their fantastic greens and other tasty items, and we are able to get many other fruits and veggies from our vendors from farther afield.

### COMMUNITY HELP

As always, we are looking for more volunteers who want to work in the store or help with picking up items for us, or dropping off things in the case of garbage day! We are also always looking for suggestions and comments on how things are going, as well as what changes you may like to see in inventory or practices, so please drop us a line if you have any. The food shelf is also back up and running, so if you have a need, please feel free to utilize it! There are occasionally items like bread that may be in the cooler or freezer that you may take, just let us know and we will get it for you. ~Bob Knudsen



### **A Cupcake Bouquet**

Cupcakes made by Pierce's Store assistant manager Rob Jaimes are a feast for the eyes as well as the tummy! Gift boxes available for the perfect Hostess Gift!

The Times of Shrewsbury  
P. O. Box 373  
Cuttingsville, VT 05738

PRESORT STD  
US POSTAGE PAID  
SHREWSBURY, VT  
05738  
PERMIT NO. 2

To: Postal Patron

---

Donors are recognized for the remainder of the calendar year in which their donation is received. The Times is mailed to all residents of Shrewsbury and is also available online at the Town website. The cost of printing and mailing is made possible through advertising and your donations which are very much appreciated! Donations can be mailed to: Times of Shrewsbury, P. O. Box 373, Cuttingsville, VT 05738. **THANK YOU!**

Larry & Lori Abelman  
Gary & Minnie Arthur  
Roy Arthur  
Steve Banik & Virginia Gundersen  
Randell & Diane Barclay  
Michael & Elizabeth Bedesem  
John & Mary Beerworth  
John & Linda Berryhill  
Rich & Cynthia Biziak  
Dave & Debbie Blecich  
Sandy & Kristi Bragg  
Daniel & Virginia Buckley  
Jim Bulno  
Carol Calotta  
Herb Carrara  
Jamie & Catherine Carrara  
Michael & Laura Cashel  
Connie & John Cioffi  
Christina Clarke  
Peter & Theresa Clarke  
Scott & Lindsay Courcelle  
Douglas Crowe & Amanda Ciaccio  
Marilyn Dalick  
Sally Deinzer  
Linda & Phillippe Ducrot  
Stan & Louise Duda  
Wayne & Lizzie Emmons  
Nils & Pamela Ericksen  
Kathi & Timothy Faulkner  
Gene & Kathy Felder  
Chuck & Luisa Finberg  
Scott Garren & Heather Shay  
Jonathan Gibson & Eliza Mabry  
Richard Gile & Sue Brown  
Mark & Carol Goodwin

Peter & Pam Grace  
Barry & Barbara Griffith  
John & Betty Heitzke  
Betsy Hinckley  
Carmine Iannace & Rita Gyls  
Martha Herbert Izzi  
Jeffrey & Diane Jakobsen  
Ellen Jorgensen  
James & Laura Keller  
Robert & Judith Landon  
Marcos & Turiya Levy  
Mark & Connie Mackintosh  
Ed & Clare Mangine  
Gerry & Chryl Martin  
Stephen & Patricia Martyn  
Taffy Maynard  
Lynn McDermott  
Michael & Jennifer McDermott  
Mill River Unified Union School District  
Jeff & Pam Monder  
Moody Family  
Jack & Joan Mulqueen  
Raymond & Cheryl Noble  
Fran Patten  
Jack & Sharon Perry  
Roxanne Ramah  
Ed & Adrienne Raymond  
Russ & Donna Reay  
Rainbow Riding Center  
Helen & Andy Richards-Peelle

Ridlon Family  
Nathan Rudisill & Carrie Clancy  
Ed & Judy Ryan  
Thomas & Donna Ryan  
Gary & Margery Salmon  
Susan Savage & Irvin Gordon  
Brian & Patricia Sedaille  
Paul Sgalia & Victoria Arthur  
Alan & Linda Shelvey  
**Shrewsbury**  
Community Church  
Conservation Commission  
Cooperative at Pierce's Store  
Historical Society  
Library  
Volunteer Fire Department  
Sirjane Family  
Donna Smith  
Bob & Sally Snarski  
John C. Stewart II  
Tim and Nancy Stout  
Dirk & Judith Thomas  
Paul & Sarah Titterton  
Liesbeth van der Heijden  
Ann Vanneman  
Lana Vanucchi  
Howard & Deborah Weaver  
Michael & Phyllis Wells  
Nancy & James West  
Christel Wiedmann  
Lee Wilson  
William and Peggy Wilson  
The Winkler Family  
Mark & Connie Youngstrom

